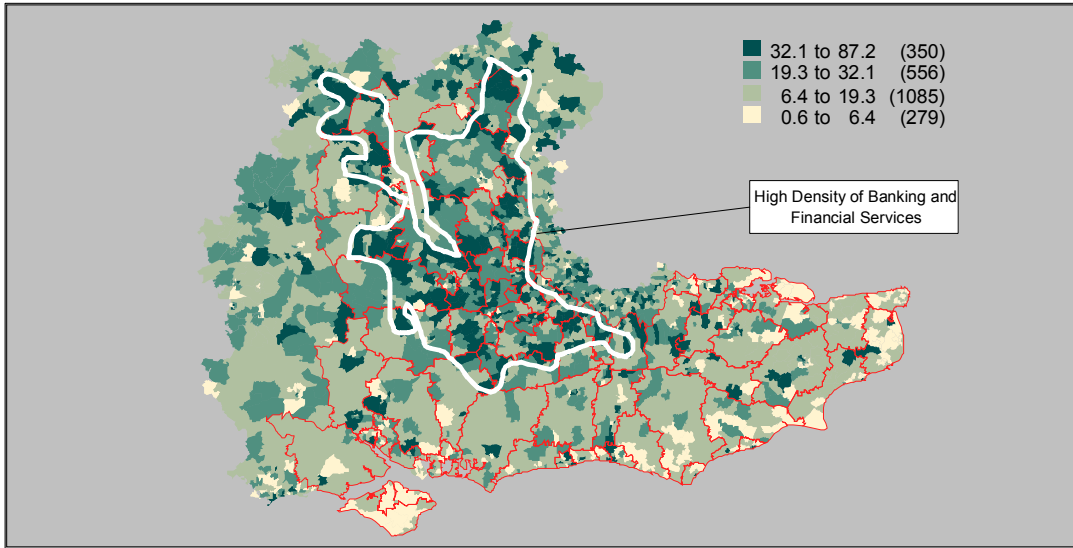
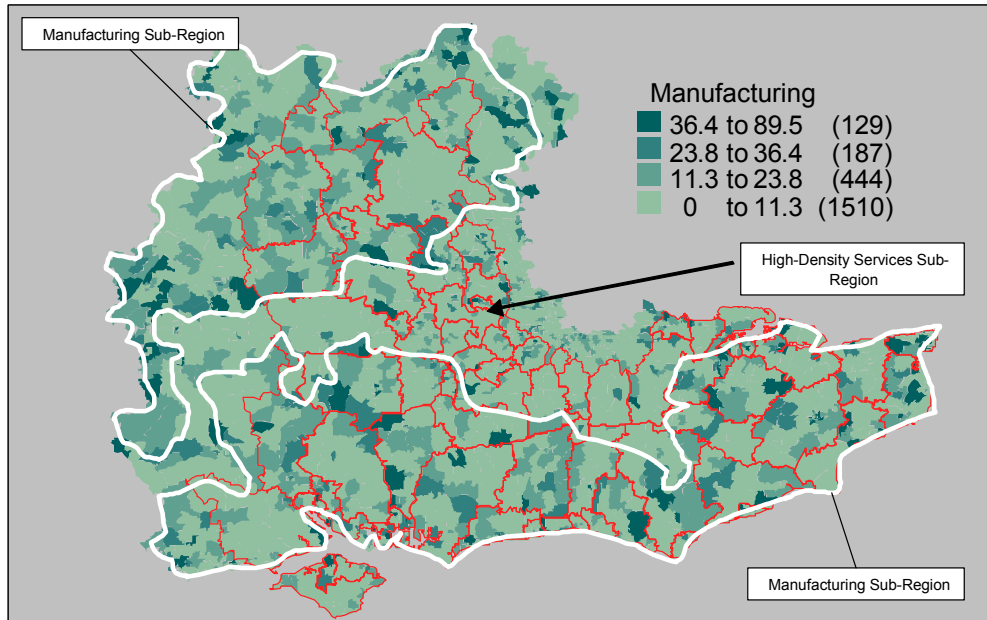


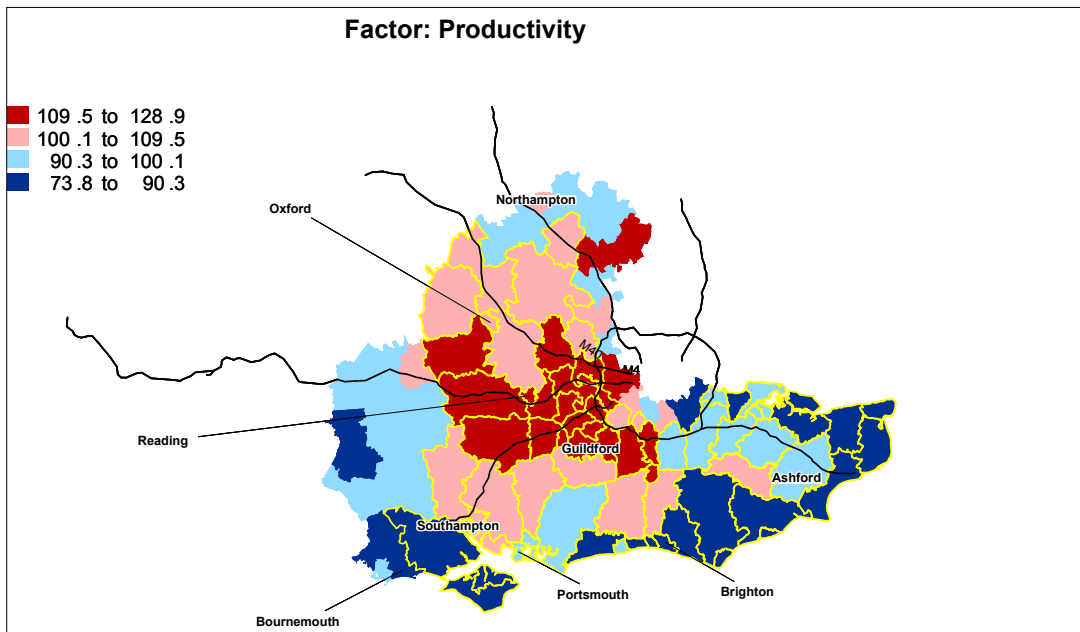
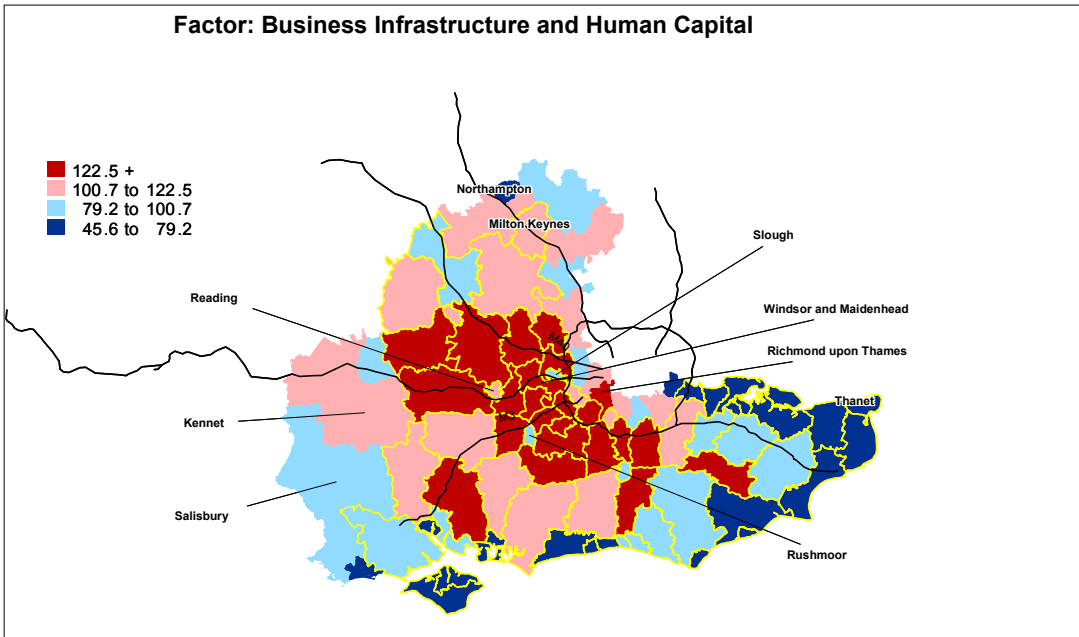
A1 : The Evidence Base

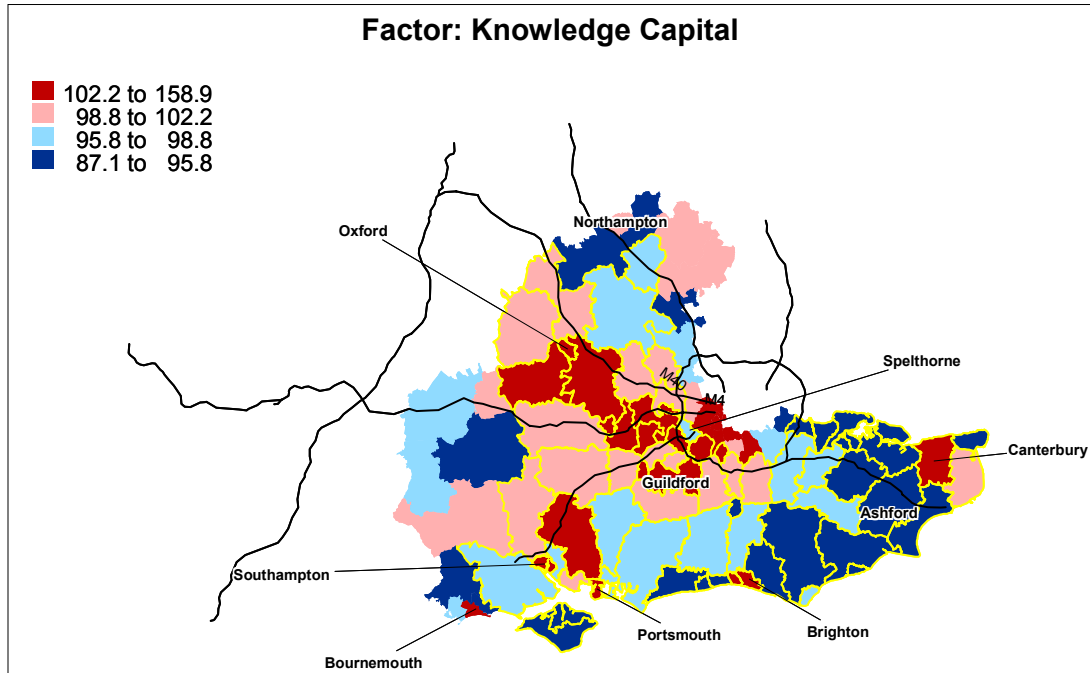
Proportion of Employment in Banking and Finance



Proportion of Employment in Manufacturing and Services







GVA per Head Current Basic Prices (£)								% growth 1995-2001	Av Annual Growth 96-2001	% growth 1998-2001	% growth 1995-1998
	1995	1996	1997	1998	1999	2000	2001				
Adur	£8,427	£8,781	£9,223	£8,787	£9,469	£9,848	£10,199	21.0%	3.5%	16.1%	4.3%
Arun	£7,046	£7,394	£8,577	£8,119	£8,716	£9,187	£9,470	34.4%	5.7%	16.6%	15.2%
Basingstoke and C	£12,997	£15,018	£16,202	£16,415	£17,784	£18,570	£19,261	48.2%	8.0%	17.3%	26.3%
Bracknell Forest	£14,728	£15,287	£16,347	£19,134	£20,880	£21,863	£22,713	54.2%	9.0%	18.7%	29.9%
Brighton and Hove	£11,791	£11,858	£13,464	£14,141	£15,426	£16,138	£16,760	42.1%	7.0%	18.5%	19.9%
Canterbury	£9,981	£10,090	£10,262	£9,503	£10,261	£10,783	£11,147	11.7%	1.9%	17.3%	-4.8%
Cherwell	£11,993	£12,633	£14,404	£16,014	£17,288	£18,034	£18,652	55.5%	9.3%	16.5%	33.5%
Chichester	£11,970	£12,385	£13,833	£13,516	£14,556	£15,338	£15,801	32.0%	5.3%	16.9%	12.9%
Chiltern	£9,796	£9,680	£9,966	£11,009	£11,904	£12,421	£12,885	31.5%	5.3%	17.0%	12.4%
Dartford	£12,379	£12,310	£14,456	£13,928	£15,005	£15,591	£16,131	30.3%	5.1%	15.8%	12.5%
Dover	£10,448	£11,229	£11,794	£10,246	£10,987	£11,492	£11,866	13.6%	2.3%	15.8%	-1.9%
East Hampshire	£7,186	£9,789	£10,571	£10,541	£11,365	£11,888	£12,294	71.1%	11.8%	16.6%	46.7%
Eastbourne	£10,028	£9,578	£9,785	£11,125	£12,041	£12,586	£13,046	30.1%	5.0%	17.3%	10.9%
Eastleigh	£12,367	£12,442	£14,224	£15,381	£16,550	£17,221	£17,853	44.4%	7.4%	16.1%	24.4%
Elmbridge	£10,413	£11,299	£11,516	£14,452	£15,724	£16,476	£17,128	64.5%	10.7%	18.5%	38.8%
Epsom and Ewell	£12,605	£10,607	£12,443	£16,410	£17,936	£18,825	£19,538	55.0%	9.2%	19.1%	30.2%
Fareham	£9,253	£12,519	£12,955	£13,887	£15,006	£15,657	£16,200	75.1%	12.5%	16.7%	50.1%
Gosport	£7,732	£8,869	£9,028	£9,931	£10,729	£11,179	£11,555	49.4%	8.2%	16.4%	28.4%
Gravesham	£8,370	£8,864	£9,220	£9,183	£9,876	£10,304	£10,657	27.3%	4.6%	16.1%	9.7%
Guildford	£11,788	£14,480	£15,771	£17,445	£18,989	£19,870	£20,598	74.7%	12.5%	18.1%	48.0%
Hart	£8,107	£9,657	£9,984	£14,673	£16,032	£16,845	£17,473	115.5%	19.3%	19.1%	81.0%
Hastings	£9,563	£9,899	£9,886	£9,726	£10,489	£10,910	£11,283	18.0%	3.0%	16.0%	1.7%
Havant	£8,388	£10,948	£10,861	£10,469	£11,278	£11,667	£12,063	43.8%	7.3%	15.2%	24.8%
Horsham	£11,610	£11,567	£12,139	£12,094	£13,080	£13,774	£14,264	22.9%	3.8%	17.9%	4.2%
Isle of Wight	£8,338	£9,714	£9,768	£10,132	£10,896	£11,415	£11,791	41.4%	6.9%	16.4%	21.5%
Lewes	£9,319	£10,284	£10,778	£10,894	£11,719	£12,210	£12,616	35.4%	5.9%	15.8%	16.9%
Maidstone	£15,059	£15,529	£16,237	£14,457	£15,659	£16,443	£16,994	12.8%	2.1%	17.5%	-4.0%
Medway Towns	£9,319	£9,527	£10,423	£10,161	£11,001	£11,458	£11,868	27.4%	4.6%	16.8%	9.0%
Mid Sussex	£12,810	£13,704	£14,456	£13,703	£14,904	£15,592	£16,163	26.2%	4.4%	18.0%	7.0%
Milton Keynes	£15,912	£16,433	£18,132	£19,955	£21,587	£22,478	£23,332	46.6%	7.8%	16.9%	25.4%
Mole Valley	£14,213	£17,963	£18,869	£22,540	£24,653	£25,876	£26,853	88.9%	14.8%	19.1%	58.6%
New Forest	£8,903	£9,170	£9,744	£10,163	£10,958	£11,475	£11,868	33.3%	5.6%	16.8%	14.2%
Portsmouth	£13,344	£15,890	£17,728	£15,442	£16,713	£17,385	£17,996	34.9%	5.8%	16.5%	15.7%
Reading	£20,448	£21,866	£22,523	£23,249	£25,533	£26,689	£27,720	35.6%	5.9%	19.2%	13.7%
Reigate and Banst	£13,068	£14,255	£14,844	£18,065	£19,633	£20,509	£21,299	63.0%	10.5%	18.0%	38.2%
Rother	£5,789	£5,721	£6,547	£7,484	£8,070	£8,509	£8,786	51.8%	8.6%	17.4%	29.3%
Runnymede	£14,954	£17,343	£17,267	£17,958	£19,851	£20,770	£21,496	43.7%	7.3%	19.7%	20.1%
Rushmoor	£15,609	£15,485	£16,865	£17,610	£19,078	£19,897	£20,624	32.1%	5.4%	17.1%	12.8%
Sevenoaks	£10,261	£10,081	£10,647	£10,778	£11,670	£12,237	£12,689	23.7%	3.9%	17.7%	5.0%
Shepway	£10,372	£10,360	£11,300	£10,615	£11,583	£12,102	£12,530	20.8%	3.5%	18.0%	2.3%
South Buckingham	£12,873	£13,717	£14,280	£16,165	£17,537	£18,394	£19,140	48.7%	8.1%	18.4%	25.6%
South Oxfordshire	£11,502	£12,120	£12,229	£15,338	£16,724	£17,532	£18,202	58.3%	9.7%	18.7%	33.4%
Southampton	£15,966	£17,547	£18,362	£17,348	£18,900	£19,709	£20,433	28.0%	4.7%	17.8%	8.7%
Spelthorne	£14,285	£16,647	£25,259	£32,688	£35,438	£36,630	£38,198	167.4%	27.9%	16.9%	128.8%
Surrey Heath	£15,897	£17,237	£16,921	£18,087	£19,632	£20,517	£21,245	33.6%	5.6%	17.5%	13.8%
Swale	£9,980	£9,614	£10,625	£9,870	£10,538	£10,984	£11,318	13.4%	2.2%	14.7%	-1.1%
Tandridge	£10,336	£9,861	£9,409	£11,309	£12,276	£12,933	£13,409	29.7%	5.0%	18.6%	9.4%
Test Valley	£12,190	£13,866	£14,987	£14,450	£15,574	£16,255	£16,808	37.9%	6.3%	16.3%	18.5%
Tonbridge and Ma	£12,919	£14,935	£14,682	£14,648	£15,730	£16,406	£16,947	31.2%	5.2%	15.7%	13.4%
Tunbridge Wells	£14,428	£14,871	£15,352	£14,522	£15,730	£16,532	£17,102	18.5%	3.1%	17.8%	0.7%
Vale of White Hor	£13,922	£14,714	£15,564	£16,891	£18,368	£19,220	£19,907	43.0%	7.2%	17.9%	21.3%
Waverley	£8,857	£12,148	£13,767	£13,522	£14,725	£15,458	£16,022	80.9%	13.5%	18.5%	52.7%
Wealden	£7,260	£7,497	£8,319	£8,848	£9,530	£10,009	£10,344	42.5%	7.1%	16.9%	21.9%
West Berkshire	£14,805	£16,118	£16,860	£17,769	£19,261	£20,109	£20,877	41.0%	6.8%	17.5%	20.0%
West Oxfordshire	£9,176	£9,899	£10,776	£12,063	£13,014	£13,640	£14,127	53.9%	9.0%	17.1%	31.5%
Windsor and Maid	£11,592	£14,782	£15,706	£17,762	£19,421	£20,387	£21,197	82.9%	13.8%	19.3%	53.2%
Woking	£13,995	£15,436	£14,866	£16,703	£18,223	£19,106	£19,831	41.7%	6.9%	18.7%	19.3%
Wokingham	£9,931	£10,291	£12,593	£14,420	£15,716	£16,450	£17,074	71.9%	12.0%	18.4%	45.2%
Worthing	£12,760	£13,708	£14,426	£13,957	£15,217	£15,892	£16,469	29.1%	4.8%	18.0%	9.4%
Wycombe	£15,280	£15,956	£17,094	£18,149	£19,689	£20,517	£21,280	39.3%	6.5%	17.2%	18.8%
Slough	£22,455	£23,013	£22,423	£25,661	£27,771	£28,782	£29,841	32.9%	5.5%	16.3%	14.3%
Aylesbury Vale	£10,636	£12,815	£12,752	£12,190	£13,163	£13,752	£14,217	33.7%	5.6%	16.6%	14.6%
Winchester	£14,727	£18,895	£19,805	£17,323	£18,827	£19,774	£20,398	38.5%	6.4%	17.8%	17.6%
Ashford	£11,701	£12,438	£11,241	£11,104	£11,912	£12,360	£12,616	7.8%	1.3%	13.6%	-5.1%
Thanet	£7,171	£7,342	£7,361	£7,058	£7,562	£7,827	£7,988	11.4%	1.9%	13.2%	-1.6%
Oxford	£17,207	£17,591	£17,002	£19,930	£21,802	£22,866	£23,922	39.0%	6.5%	20.0%	15.8%
Crawley	£27,521	£28,273	£29,416	£27,306	£29,377	£30,378	£31,624	14.9%	2.5%	15.8%	-0.8%
South East (Sourc	£12,026	£12,794	£13,757	£14,882	£15,698	£16,555	£17,345	44.2%	7.4%	16.6%	23.7%

Source: Robert Huggins Associates Estimates/Eurostat/National Statistics